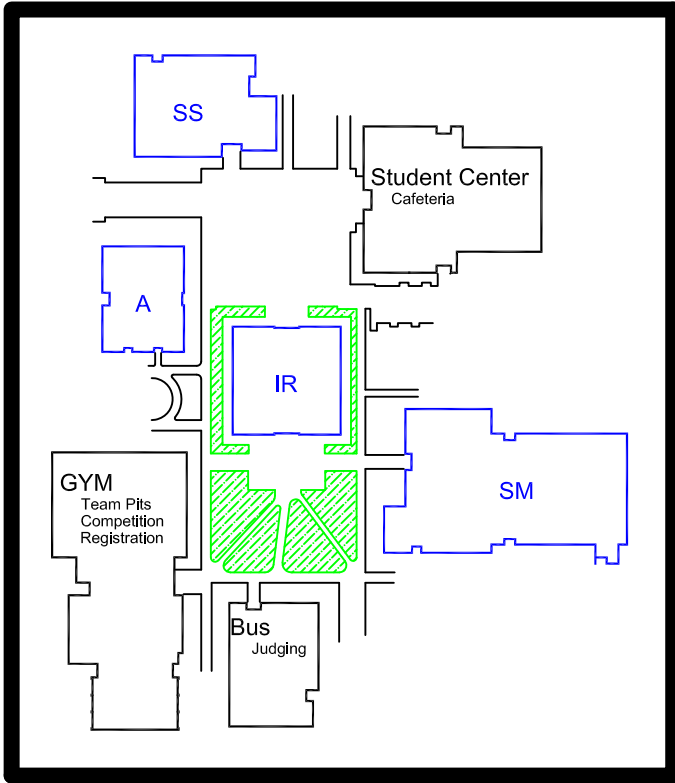


STLCC Site Map



Schedule

7:30 Team registration opens outside the pits
Pits open
Gym doors open to teams

NOTE: NO TEAM PIT ACCESS UNTIL 7:30am

8:00 Registration closes
Judging begins (See judging schedule)
Robot inspection opens (See inspection schedule)
Practice matches start (First come first served)

NOTE: ROBOT INSPECTIONS ARE SCHEDULED

11:20 Drivers meeting (In the Small Gym)
Coaches meeting (PE204)

11:50 Opening ceremony in the gym

12:15 Qualifying matches begin

3:00 Alliance selection

3:30 Elimination matches begin

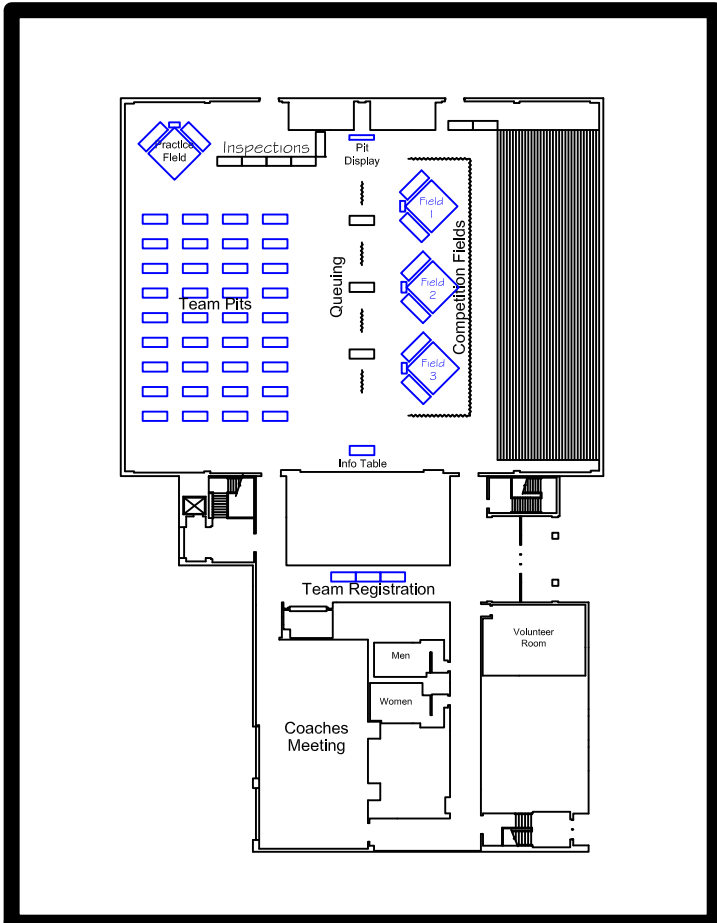
Finals (Immediately following elimination matches)

Awards ceremony (Estimated time 5:30)

v1.1

Gym

Competition and Pits



Business

Judging

